

046859

RECEIVED  
LARAMIE COUNTY  
CHEYENNE, WY.

CERTIFIED LAND CORNER RECORDATION '88 JUL 20 AM 11 30

DESCRIPTION OF CORNER EVIDENCE FOUND, AND ORIGINAL RECORD (If known)  
Found remnants and broken pieces of sandstone.

S.8 & S.9  
S.17 S.16  
T.18N., R.67W.  
6th P.M.

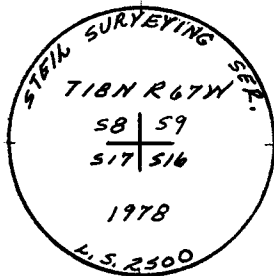
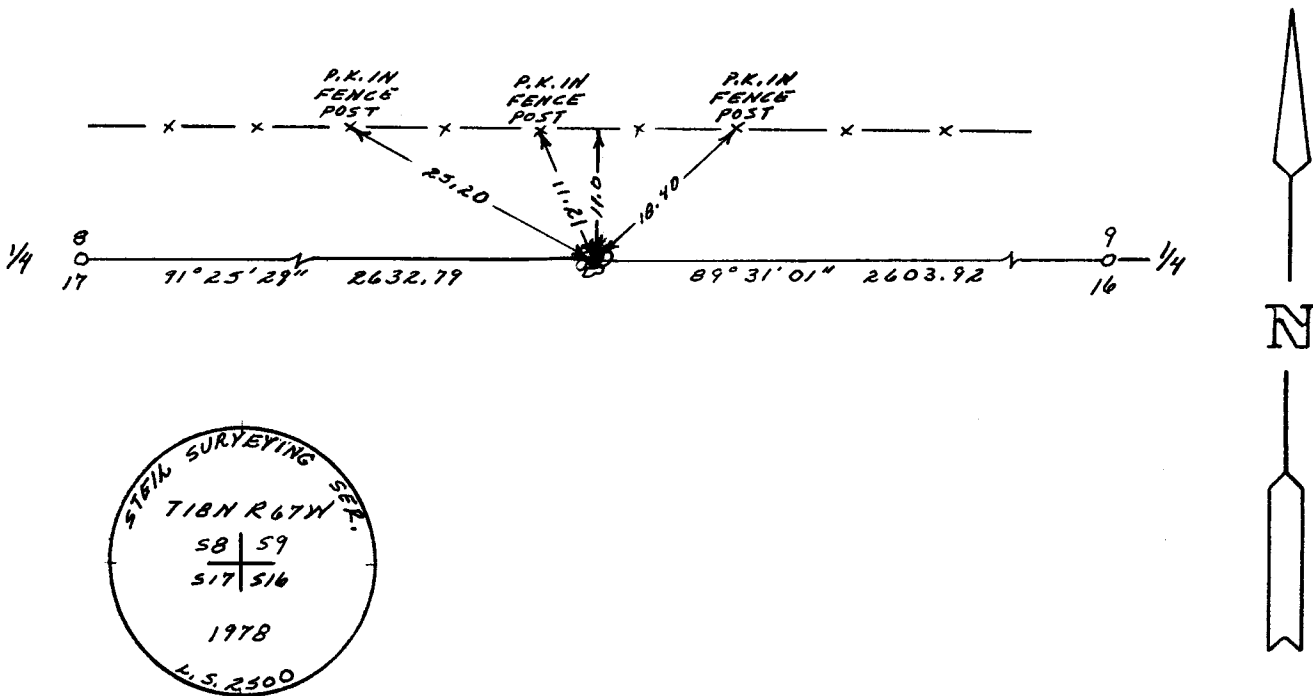
G.L.O. Record - Set sandstone 18"x12"x6" for sec. cor.

DESCRIPTION OF MONUMENT AND ACCESSORIES ESTABLISHED  
TO PERPETUATE THE ORIGINAL LOCATION OF THIS CORNER:

At the Corner: Set 3"x30" long aluminum pipe w/3 1/2" aluminum cap encircled by a collar of stone and stamped as shown below.

Accessories: See ties below

SKETCH, WITH COURSE AND DISTANCE TO ADJACENT CORNER IF DETERMINED IN THIS SURVEY.  
(May Sketch or Paste Reproduction on Reverse Side.)



I, John A. Steil certify that I have carefully performed or reviewed the work done on the diagrammed corner as reported on this recordation form and approve the same.

*John A. Steil*  
Signature of Surveyor

L.S. 2500  
Registration No.

STATE OF WYOMING,  
Office of Clerk and Recorder,  
County of Laramie

This "corner record" was filed for record on the 20<sup>th</sup> day of July, 1988, was noted on the cross-index plat and is assigned page No. \_\_\_\_\_, in book No. \_\_\_\_\_.

*James C. Whitehead*  
County Official

Cross Index No. <u>J-9</u>	T. <u>18N</u>	R. <u>67W.</u>	Mer. <u>6th</u>
_____	T. _____	R. _____	Mer. _____
_____	T. _____	R. _____	Mer. _____
_____	T. _____	R. _____	Mer. _____
_____	T. _____	R. _____	Mer. _____
_____	T. _____	R. _____	Mer. _____
_____	T. _____	R. _____	Mer. _____